



3 PHASE ENERGY & POWER METER

EM-10

APPLICATIONS

Electrical Control Panel

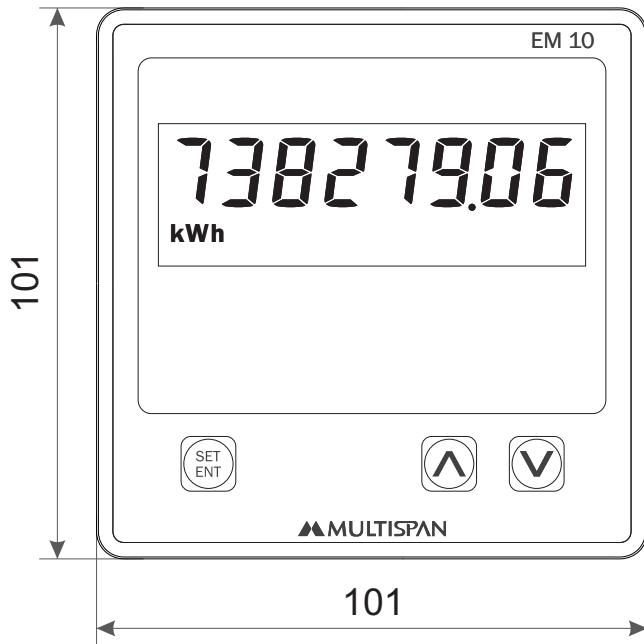
Power Distribution

Instrumentation Panel

Transformer Training

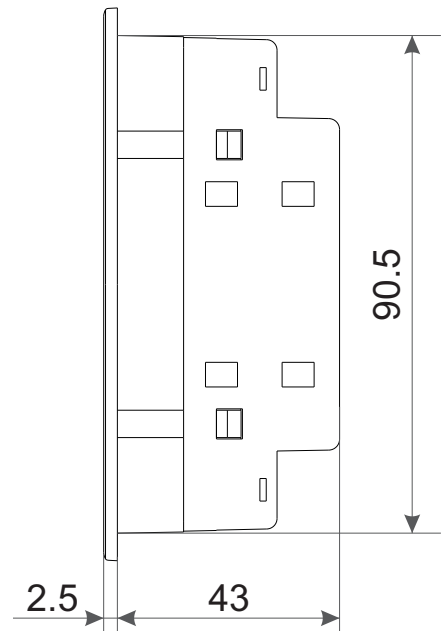
Mechanical Dimensions

Body Dimensions



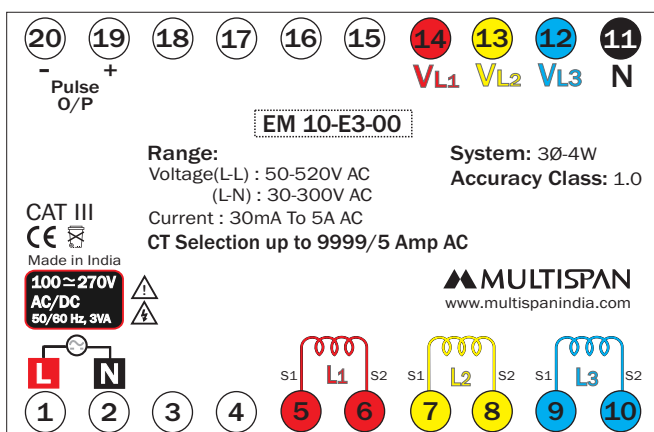
FRONT VIEW

All dimensions are in mm

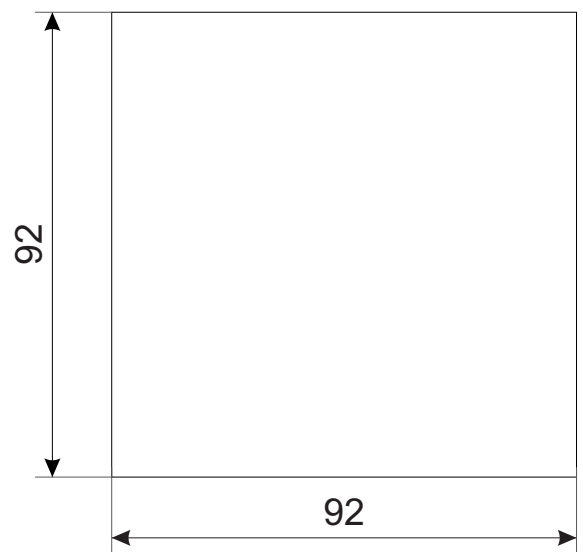


RIGHT SIDE VIEW

Connection Diagram



Panel Cutout



TECHNICAL DATA

Input		3 Ø 4 Wire
	Voltage	30 To 300V AC (L- N) 50 To 520V AC (L- L)
	Current	30mA To 5A AC
Specification	kW	0.000 To 9999 kW
	Measuring Range	0 to 99999999 kWh (Active energy)
Accuracy		Class 1.0
Power Supply		100 To 270V AC/DC, 50/60Hz, Approx 3VA
Certificate		CE

Meter Type

3Ø - 4W

Accuracy

Class 1.0

Input

Voltage

Voltage	30 To 300V (L-N) 50 To 520V (L-L)
---------	--

Burden	<0.2 VA
--------	---------

Current

Secondary Current	5A (Factory set)
-------------------	--------------------

Burden	<0.2 VA
--------	---------

CT Primary	5 To 9999 Programmable
------------	------------------------

Starting Current	30mA
------------------	------

Output

Pulse Output (Optional)

Voltage :- External 24V DC
Current Capacity :- 25mA
Pulse width - 50 to 500ms

Calculated Parameters

Power (Phase wise & Total)

Active Power (kW) Total
Phase wise

Energy

Active Energy (kWh)

Display

Display	8 Digit 7 Seg 0.50" Red LED Display
---------	--

Key	SET/ENT , INC,DEC
-----	-------------------

Auxiliary Power Supply

Power Supply

100 To 270V AC/DC,
50/60Hz

Consumption

3VA

Environmental Characteristics	
Working Temperature	0 to 55 °C
Storage Temperature	0 to 55 °C
Relative Humidity	95% RH Non-condensing
Warm up time	5 minutes

Mechanical Characteristics	
Mounting Type	Panel Mount
Dimension (HxWxD) mm	101 x 101 x 43
Panel Cutout (HxW) mm	92 x 92
Material	Polycarbonate (PC)
Front Enclosure	ABS
Terminal Screw Size	M3.5
Screw Torque (N.m)	0.5
Wire Gauge (AWG)	26-14
Weight (Approx) gms	Unpacked : 260 Packed : 290
Accessories	1 Pair of Mounting Clamps